

ram
RAPID AIR MOVEMENT®

Wall Humidifier

Operating instructions

Instructions d'utilisation

Instrucciones de funcionamiento

Bedienungsanleitung

Istruzioni d'uso

Operativní instrukce



GB Please read these instructions carefully

Thank you for choosing the *RAM Wall Humidifier*. Each unit has been manufactured to ensure safety and reliability. Before using for the first time, please read the instructions carefully and keep for future reference.

We strongly recommend the use of a deionising filter, to ensure a long working life of your humidifier, especially in hard-water areas.

Parts List

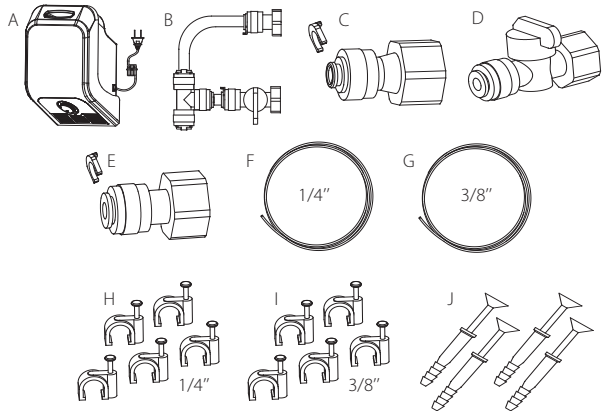
- A. 1 x RAM Wall Humidifier
- B. 1 x Outlet/Overflow Fitting – 1/2" BSP to 3/8" Push-fit
- C. 1 x 1/2" to 1/4" Inlet Fitting – 1/2" BSP to 1/4" Push-fit
- D. 1 x Mains Fitting with Valve – 1/2" BSP to 1/4" Push-fit
- E. 1 x 1/2" to 3/8" Drain Fitting – 1/2" BSP to 3/8" Push-fit
- F. 2.5 m x 1/4" Pipe
- G. 2.5 m x 3/8" Pipe
- H. 5 x Cable Clips for 1/4" Pipe
- I. 5 x Cable Clips for 3/8" Pipe
- J. 4 x Expansion Screws

Recommended (not included):

Inline DI Resin Water Filter (09-435-580)

Purelite Polystyrenic Resin Refill Pack - 220 ml (09-435-585)

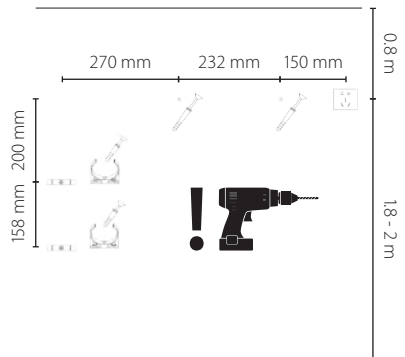
Available where you purchased this humidifier.



Installation Instructions

Before installing the humidifier please ensure your wall can hold at least 15 kg.

1. Drill two 8 mm holes as per the diagram. If using an inline de-ionising filter, the holes for the brackets should also be drilled at this point.
2. Remove the long screw from the expansion plug, then push the expansion plugs all the way into the holes. Now screw the screws back into the expansion plugs, leaving about 5mm protruding. Also fit the filter brackets (if using) at this point.
3. Hang the Humidifier on the screws from the keyhole hangers on the bracket on the back of the unit. **Ensure it is secure and will not move.**



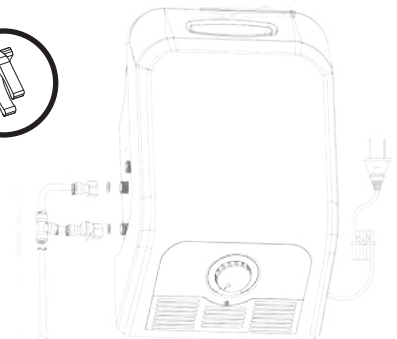
Fitting and Pipe Assembly

Push-fit connections:

1. Remove blue C-ring.
2. Insert pipe fully.
3. Pull pipe back slightly to allow room for blue C-ring.
4. Replace C-ring in original position.

When connecting threaded side, ensure the rubber sealing washer is in place.

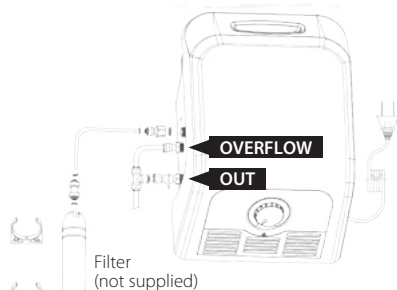
If removal of pipe is required at any point, follow the above in reverse, but after pushing the pipe all the way in, hold the white collar in to remove the pipe.



Water Drain Assembly (all 3/8" Push-fit fittings and Pipe):

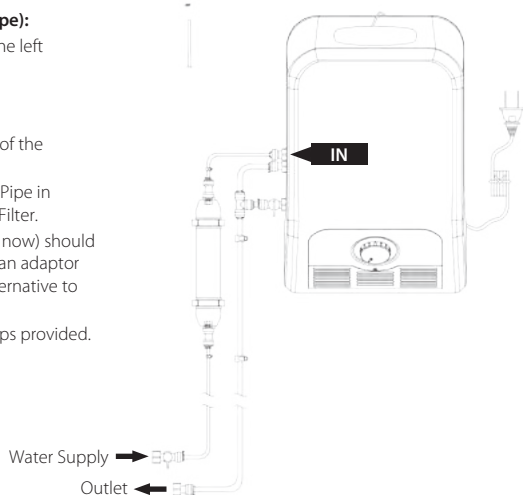
NOTE: the drain pipe should always run down or horizontally, at no point should it turn upwards or loop – this may prevent proper drainage or cause a siphon effect.

1. Connect the Outlet/Overflow Fitting to the marked OUT and OVERFLOW threads, on the left side of the unit, as per diagram (OUT to Fitting with Valve, OVERFLOW to Fitting with NO Valve).
2. Connect the length of 3/8" Pipe to the Outlet/Overflow Fitting (the Pipe can be cut shorter if required).
3. Connect the Drain Fitting to the other end of the 3/8" Pipe.
4. The Drain Fitting can be connected to further plumbing with the 1/2" BSP Thread or run straight into a drain or suitable container.
5. Fix the 3/8" Pipe to the wall using the larger Cable Clips provided.



Water Inlet Assembly (all 1/4" Push-fit fittings and Pipe):

1. Connect the Inlet Fitting to the marked IN thread, on the left side of the unit, as per diagram.
2. Connect the length of 1/4" Pipe to the Inlet Fitting (the Pipe can be cut shorter if required).
3. Connect the Mains Fitting with Valve to the other end of the 1/4" Pipe.
4. Position the Filter (if using) in it's brackets, cut the 1/4" Pipe in an appropriate place and connect the cut ends to the Filter.
5. The Mains Fitting with Valve (keep the valve closed for now) should now be connected to a suitable mains water source – an adaptor or bush may be required if the mains source has an alternative to 1/2" BSP thread.
6. Fix the 1/4" Pipe to the wall using the smaller Cable Clips provided.



Usage Instructions

1. Plug in the humidifier and turn on the power switch which is located on the right side of the humidifier.
2. Open the mist outlet cover.
3. Ensure the Outlet Valve is shut, then open the Mains Fitting Valve (including any tap it is connected to). Water should now flow into the unit.
4. The humidifier will begin to work 10 seconds after it has filled sufficiently.
5. Adjust the humidity dial to your ideal humidity.
6. To shut down your humidifier for a short amount of time just flick the power switch to off. If you are leaving your humidifier for a longer period:
 - disconnect from the mains power
 - shut off the inlet valve
 - open the outlet valve to empty the water
 - close the mist outlet cover

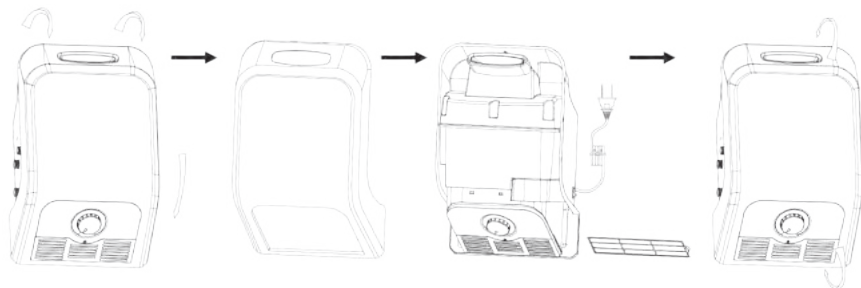
Effective Humidifying Area Table

Target Humidity (% RH)	Effective Humidifying Area (m ³)*	Equivalent Area (m ²)	Humidifying Time (min.)
40	300	100	50
50	250	83	62
60	200	70	66
70	150	50	76
80	120	40	79

* Based on 3 m room height

Maintenance

For all maintenance, disconnect the humidifier from the mains power. It is recommended to carry out the below maintenance every 3 to 6 months.



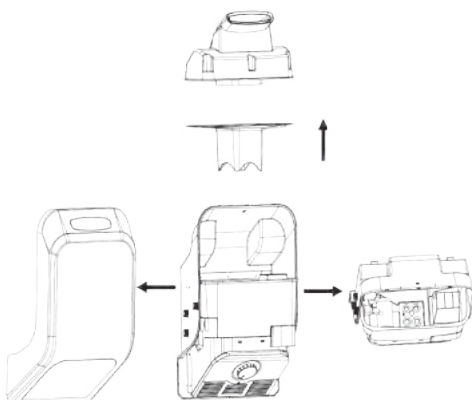
Dust screen maintenance

1. To take off the front cover, lift the clips at the top and pull forward, then pull down to remove.
2. Slide the dust screen out from the right-hand side, just below the humidity dial
3. Clean the net using hot soapy water and a cloth. Then dry well with a cloth.
4. Finally, refit the panel, starting at the bottom and reversing the process to remove it.

Chamber maintenance

1. Remove the front panel as above.
2. Remove the mist outlet and reservoir cover.
3. Using a soft clean cotton cloth, wipe down the inner surfaces of the atomizing chamber and the mist maker.
4. Drain the water, refill and repeat until it is completely clean.
5. Refit the reservoir cover, mist outlet and front panel.

Following maintenance, ensure the humidifier is properly reassembled and connected as per Usage Instructions, to restart.



Care and Storage

Before cleaning (externally) make sure the humidifier is switched off and unplugged. Clean your humidifier with a soft damp cloth, never immerse in water or let water penetrate the motor housing. Make sure the fan is completely dry before use.

Never use abrasive or aggressive cleaning products on the humidifier housing as this can damage the humidifier.

When not in use store the humidifier in its box to protect from household dust and store in a cool dry environment.

Service

If the unit malfunctions, or has been dropped or damaged, turn off the power and check for damage to the power lead or plug. Do not operate if damage has occurred. Do not take the unit apart or alter the unit in any way as this will void your warranty and may cause further damage to the unit or personal injury.

If returning a faulty product, please make sure the complete unit is returned to your retailer complete with proof of purchase (warranty will be void without proof of purchase). For your convenience please make sure you make a record of your purchase date, retailer name, model number and date of manufacture.

Warranty

1 (one) year limited warranty. Rapid Air Movement (RAM) guarantees this product free from defects in materials and workmanship for a period of 1(one) year from point of purchase. You will void this warranty if the unit is not used in accordance to these instructions, if the unit is not used with the correct voltage, is tampered with or modified in any way or you do not have proof of purchase. This warranty does not affect your statutory rights.

The CE symbol is a declaration by HydroGarden that this product has been manufactured to comply with all relevant and current EU directives.

Help the environment by disposing of your product responsibly. The wheelie bin symbol indicates the product must not be disposed of in the domestic waste as it contains substances which can be damaging to the environment and health. Check your local authority for

recycling points and advice. Operate in a safe manner. This is an electrical item so make sure you use only as intended and instructed in this document. Misuse may cause fire or personal injury.

This humidifier is intended for household use only, to protect against electrical shock the unit must not be immersed in any liquids or spray. Do not use in damp humid environments.

Due to it being an electrical item, if the unit is being used by children then care must be taken and we recommend adult supervision.

Remove humidifier from power for cleaning or for long periods of non-use.



Input	220-240 V AC 50 Hz
Power	120 W
Max. Output	1600 ml/hr



Wall Humidifier

rapidairmovement.co.uk

